



#### Alu-Bast

The Alu-Bast collection by ONE A is a modular system, which can be assembled in various constellations.

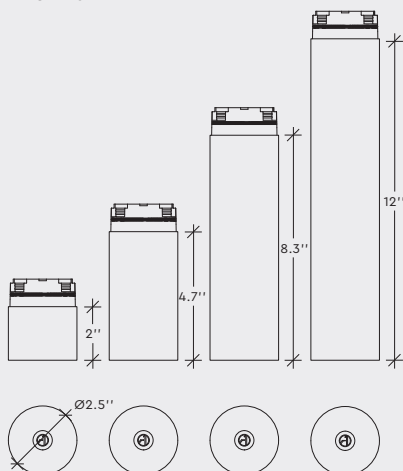
The collection consists of two main components, respectively in aluminium and alabaster, available in different lengths.

An elegant soft light is emitted through the alabaster stone, creating a cozy atmosphere.

#### TUBE



#### ALUBASTER



ONE A reserves the rights to change and/or update product information and accepts no liability for any printing errors.  
last updated 06 - 04 - 2022



## ALU-BAST GU10 – PENDANT

### DATA

Collection	ONE A
Product	ALU-BAST
Article no.	1N13.4491.xx01 (Tube 300, Alubaster 50) 1N13.4492.xx01 (Tube 300, Alubaster 120) 1N13.4493.xx01 (Tube 300, Alubaster 210) 1N13.4494.xx01 (Tube 300, Alubaster 300)

### SPECIFICATIONS

Weight	1.72lb – 5.29lb
Material	Aluminium, Alabaster
Light Source <i>(NOT INCLUDED)</i>	GU10 max. rating 8W Light source with 10–15° beam is recommended For further support contact LITES ON WEST 245 West 29th Street, 6th floor   NY, NY 10001 T: 212 775 6363   F: 212 775 0355 E: info@litesonwest.com

IP protection grade	IP20
Insulation class	Class II 
Labelling	

Conforms to ANSI/UL  
Std. UL 1598:2018  
Cert. to CAN/CSA  
Std. CSA C22.2#250.0:2018

### XX – COLOUR CODES

	01 – White
	53 – Elephant Grey <i>cross-brushed</i>
	92 – Black Pearl
	97 – Gold
	98 – Silver
	99 – Bronze

### NOTE

9.84 ft cord included

Due to pendant weight, some AluBast pendants are delivered including a metal wire. The metal wire can be fixed to Storm Output – see technical info for more information



The crossed-out wheeled bin symbol indicates that the item should be disposed of separately from household waste. The item should be handed in for recycling in accordance with local environmental regulations for waste disposal. By separating a marked item from household waste, you will help reduce the volume of waste sent to incinerators or land-fill and minimize any potential negative impact on human health and the environment.

#### IMPORTANT INFORMATION

Installation and mounting must be performed by a certified electrician only, and instructions must be followed.

#### CLEANING AND MAINTENANCE:

Use a soft moist cloth for cleaning. No further maintenance is required.

#### WARRANTY:

If the product is defect, please contact your supplier immediately. Please note that warranty will not apply in case of wrongful use or if unskilled personnel attempts to repair.

#### COMPONENTS

- AluBast
- wire
- allen key



## ALU-BAST PENDANT

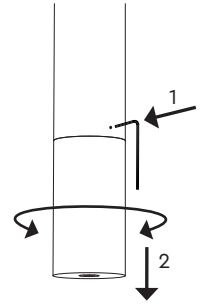
### ASSEMBLY INSTRUCTION PAGE 1 OF 3

#### STEP 1

To remove Alabaster Part:

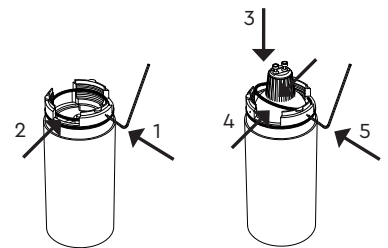
1. With the accompanying allen key turn the screw clockwise until the Alabaster part can rotate
2. Take hold of the Alabaster part, then gently pull down, whilst slightly rotating

NOTE: When rotating the fixture choose the direction with the least resistance.



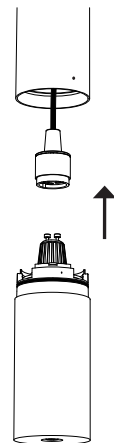
#### STEP 2

1. Turn the screws anti-clockwise
2. Remove the retaining ring, using light pressure.
3. Place the GU10 light source in the Alabaster part.
4. Mount the retaining ring using light pressure, make sure it snaps.
5. Fasten the 3 screws, so that they are flush with the fixture ring.



#### STEP 3

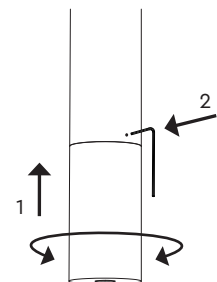
Mount the GU10 light source in the socket.



#### STEP 4

1. Remount the Alabaster part in the Tube, by gently rotating until the allen screw aligns with the hole in the Tube.
2. Secure the Alabaster part in place by turning the screw anti-clockwise until the screw is flush with the tube.

NOTE: When rotating the fixture choose the direction with the least resistance.



#### IMPORTANT INFORMATION

Installation and mounting must be performed by a certified electrician only, and instructions must be followed.

#### CLEANING AND MAINTENANCE:

Use a soft moist cloth for cleaning. No further maintenance is required.

#### WARRANTY:

If the product is defect, please contact your supplier immediately. Please note that warranty will not apply in case of wrongful use or if unskilled personnel attempts to repair.

## ALU-BAST PENDANT

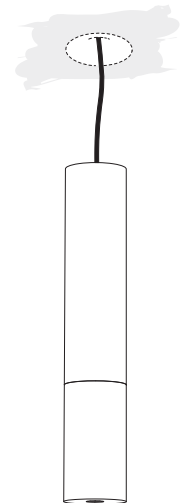
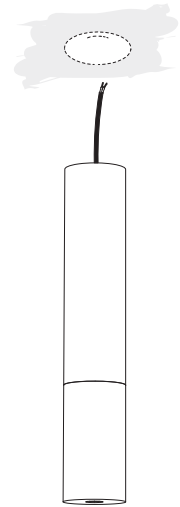
### ASSEMBLY INSTRUCTION PAGE 2 OF 3

#### STEP 5

**Make sure main power is off!**

Connect the wires

Please refer to Storm Output assembly instructions or other outlet



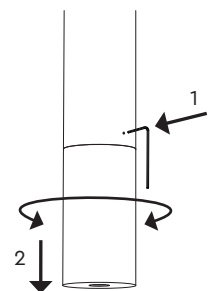
### CHANGING THE LIGHT SOURCE

#### STEP 1

**Make sure main power is off!**

To remove Alabaster Part:

1. With the accompanying allen key turn the screw clockwise until the Alabaster part can rotate
2. Take hold of the Alabaster part, then gently pull down, whilst slightly rotating



**NOTE:** When rotating the fixture choose the direction with the least resistance.

#### IMPORTANT INFORMATION

Installation and mounting must be performed by a certified electrician only, and instructions must be followed.

#### CLEANING AND MAINTENANCE:

Use a soft moist cloth for cleaning. No further maintenance is required.

#### WARRANTY:

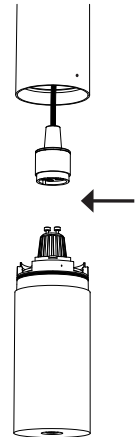
If the product is defect, please contact your supplier immediately. Please note that warranty will not apply in case of wrongful use or if unskilled personnel attempts to repair.

## ALU-BAST PENDANT

### ASSEMBLY INSTRUCTION PAGE 3 OF 3

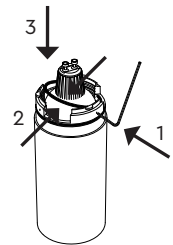
#### STEP 2

Dismount the GU10 light source from the socket.



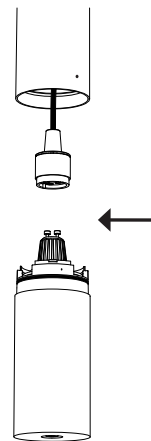
#### STEP 3

1. Turn the 3 screws anti-clockwise using the allen key.
2. Remove the retaining ring using light pressure.
3. Replace the light source with a new light source, then remount the retaining ring using light pressure, and make sure it snaps. Finally, fasten the 3 screws, so that they are flush with the fixture ring.



#### STEP 4

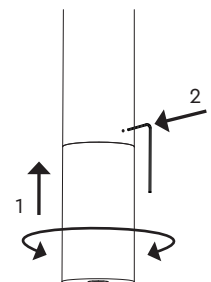
Mount the GU10 light source in the socket.



#### STEP 4

1. Remount the Alabaster part in the Tube, by gently rotating until the allen screw aligns with the hole in the Tube.
2. Secure the Alabaster part in place by turning the screw anti-clockwise until the screw is flush with the tube.

NOTE: When rotating the fixture choose the direction with the least resistance.

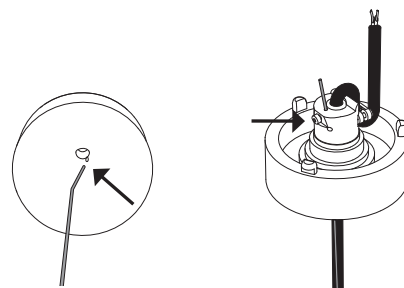


# ALU-BAST PENDANT

## WIRE SUSPENSION ASSEMBLY INSTRUCTION

Suspension wire can be mounted in Storm Output, for further information refer to Storm Output's technical information.

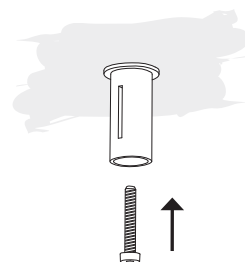
Feed the accompanying steel wire through the small hole in Storm Output, then fasten the screw



## WIRE SUSPENSION ASSEMBLY INSTRUCTION

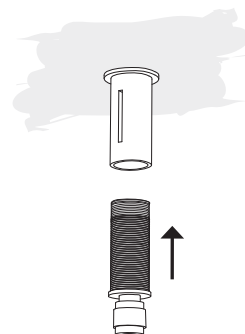
### STEP 1

Mount the wire suspension to the ceiling with a screw.



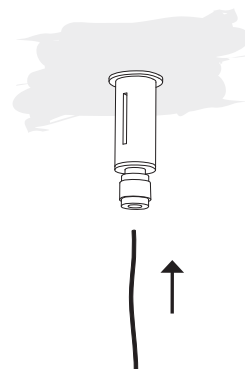
### STEP 2

Mount the wire lock in the wire suspension.



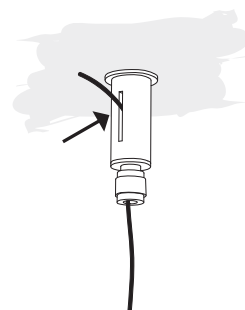
### STEP 3

Guide the wire through the wire lock



### STEP 4

Then pull the wire out through the slot



#### IMPORTANT INFORMATION

Disassembly must be performed by a certified electrician only, and instructions must be followed.

#### WARRANTY:

If the product is defect, please contact your supplier immediately. Please note that warranty will not apply in case of wrongful use or if unskilled personnel attempts to repair.

## ALU-BAST PENDANT

### DISASSEMBLY INSTRUCTION

#### STEP 1

**Make sure main power is off!**

Disconnect the cables

